

**COMMUNITY AND ORGANIZATION
RESEARCH INSTITUTE**

**ANNUAL REPORT
1992-1993**

**HAROLD L. VOTEY, JR.
DIRECTOR**

**UNIVERSITY OF CALIFORNIA
SANTA BARBARA, CA 93106**

**COMMUNITY AND ORGANIZATION
RESEARCH INSTITUTE**

**ANNUAL REPORT
JULY 1, 1992 - JUNE 30, 1993**

Director

Harold L. Votey, Jr.

Administrative Staff

Jeanie Cornet, Office Manager

Lin Moses, Accounts Manager

Joan Dandona, Personnel/Payroll, Proposal Preparation

Jan Jacobson, Travel

Brian Woods, Purchasing

Carolyn Johnson, Accounting Assistant

Turgut Tokgoz, Student Assistant

1992-1993 Advisory Committee

Harvey Molotch (Chair), Sociology

Anabel Ford, CORI

Cynthia Kaplan, Political Science

Roberta Klatzky, Psychology

Terry Smith, Geography & Computer Science

John Sutton, Sociology

Stephen Trejo, Economics

Steven Weatherford, Political Science

Ronald Williams, CORI

Chancellor

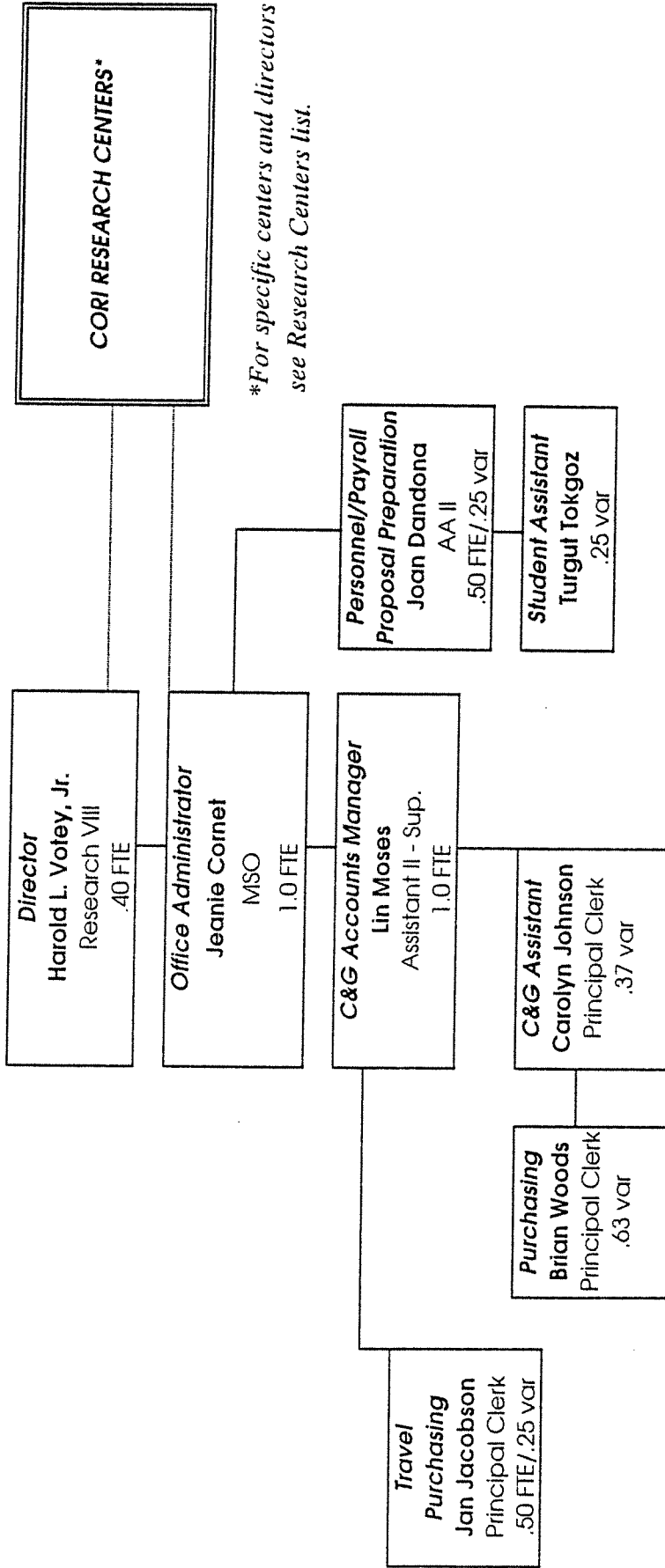
Barbara S. Uehling

Vice Chancellor for Academic Affairs

Donald W. Crawford

Associate Vice Chancellor for Research

James F. Case



*For specific centers and directors see Research Centers list.

Community & Organization Research Institute
RESEARCH CENTERS

Health Data Research Facility
R. L. Williams, Director

Center for Global Studies
Richard Appelbaum, Director

Center for the Study of Discourse
Sandy Thompson, Director

MesoAmerican Research Center
Anabel Ford, Director

Center for the Study of Religion
Clark Roof, Director

~~*California Growth Project*~~
~~Harvey Molotch, Director~~

~~*Pacific Rim Project on Mathematics Achievement*~~
~~Hziu-Zu Ho, Director~~
~~Jules Zimmer, Co-Director~~

— *Center for the Study of Business*
Clement Krouse, Director

— *Center for Labor Analysis*
Stephen Trejo, Director

A Special Farewell

It is with bittersweet feelings that we, the staff of the Community & Organization Research Institute, say farewell to Jack Votey, who is retiring after more than two decades of service to the university. While we wish Jack the very best during the coming years, we will miss him greatly.

As Director of CORI, Jack has provided the necessary leadership during difficult times of growth and change, and has built us into a flagship ORU at UCSB. A few statistics will serve to recount part of CORI's success story. In 1972-1973, CORI administered extramural research grants of well under \$100,000. In that year, only eleven proposals were submitted through the CORI office. By 1992-1993, CORI's extramural funding had reached approximately \$5 million, with fifty submitted proposals totalling \$8 million. During Jack's tenure, seven research centers have also been established, providing opportunities for multidisciplinary research in a wide range of areas. In addition, our clientele list has expanded to become the second largest on campus. Our staff has grown apace, a long way from the time when CORI could accomplish its workload with a single Administrative Assistant.

But the real story is that Jack accomplished this astonishing growth with a gentle yet firm style of leadership, never-ending good humor, and an abiding sense of fairness. These are all memories that will remain with us for years to come.

Goodbye Jack. Thank you, and the very best of luck from all of us!

THE DIRECTOR'S STATEMENT

Goals and Purposes for Which CORI Was Established

CORI's original charge has been to "serve as a major resource for basic research in the social sciences." Further, "faculty participation in interdisciplinary research" was to be encouraged. With the overlap in areas of interests among disciplines in the College of Letters and Sciences, and even, occasionally, extending to the College of Engineering and to the Graduate School of Education, CORI clients come from a much broader base than anticipated when CORI was founded. Thus, over the past twenty years, CORI has become an environment in which research has been encouraged from the social, behavioral and policy sciences and humanities, both within and across disciplines.

The most frequently mentioned measure of success for an ORU, funding for clients' research, has increased for CORI over the fiscal years 1987-88 through 1992-93 by an average of almost 23 percent annually, a further improvement over the successful history reported in the most recent Five Year Review. But quantity of funding is not the only measure of CORI success, nor has it been the sole objective of the efforts of those responsible for CORI's growth. Considerable effort goes into finding ways that researchers in different disciplines, but with common interests, can become involved in mutually beneficial research activities.

Centers of Research Serving the Academic Needs of the Community

To help to serve the instructional and research missions of the campus, a number of centers have been established within CORI for groups of researchers with common interests. Among these is the Meso American Research Center, directed by Anabel Ford. That group has been active in obtaining grants. Additionally, by creating interest in archaeological research in the Americas among the general public, substantial gifts to the University are generated annually supporting their research. Both undergraduate and graduate students are actively involved in the field research.

The Center for Global Studies, directed by Richard Appelbaum, has been hard at work encouraging involvement in research with an international or global focus. Typical has been Applebaum's own work, initially funded by the University's Pacific Rim Research Program, that focuses on international labor markets and the creation of commodities involving multiple labor markets and nations. A major task completed by the Center this year has been the expansion and refinement of a data base on UCSB faculty involvement in research topics focusing on areas of the globe other than the U.S. Better information on the nature and extent of this research will complement ongoing campus efforts to expand and create new academic undergraduate and graduate programs with a global focus. It is expected that these efforts will link with, and reinforce, campus involvement in a more broadly defined Education Abroad Program.

The Health Data Research Facility, directed by Ronald Williams, originally focused on economic factors relating to neonatal and perinatal mortality. That research led to the

development of systems to facilitate the collection of birth and death data so that improved efficiency in data collection could lead to more prompt identification of factors leading to improvements in survival rates and consequently to better management of related aspects of the health care system in California and three other states. The software developed by this group has rapidly become the standard for the state collection process for infant birth and death statistics. Cumulative extramural funding received by the Facility presently exceeds \$4.4 million.

The Center for Labor Analysis, directed by Steven Trejo, involves primarily economics faculty and graduated students. An active seminar program is maintained each academic quarter that invites presentations from distinguished visitors from other universities, UCSB faculty and graduate students. Topics range from issues of education's contribution to individuals' earnings to problems of health care, crime, international migration, and effects of marriage on mobility in third world countries.

The Center for the Study of Discourse, directed by Sandra Thompson and John DuBois, involves scholars in linguistics, psychology and sociology. A major project is the creation of a corpus of American English. Another focuses on the language of the (local) Barbereno Chumash.

A considerable body of research conducted within CORI is not related to any of these groups. Major projects relate to the environment, speech and hearing, political participation in the former Soviet Union, civil society in China, the role of religion in the social order of Los Angeles, and the training of graduate students to deal with problems in special education. Invariably, these projects involve graduate students and frequently undergraduates as well.

A further service to the campus community has been CORI's role in stimulating a response to the UC Pacific Rim Research Program. While this hasn't been an official responsibility of CORI, the Director has, for over three years, represented the campus on the Pacific Rim Research Program Executive Committee, and for the last three years has served as the chair of the campus committee. An aggressive effort has been made by the local committee to increase the quality and quantity of UCSB participation to the extent that, while we are not one of the larger campuses in the system, UCSB success in obtaining funding has been better than the UC average over the last three years. Because the disciplines most likely to be involved in the initiative tend to produce CORI clients, CORI tends to be the unit processing most of UCSB's proposals. There is an obvious link between the Pac-Rim program and the objectives of the Center for Global Studies that should only grow in the future.

Response to the Needs of the Public at Local, State and National Levels

Most of the research conducted through CORI from the social sciences and much that comes from behavioral sciences and humanities has implications for public policy. A few typical examples follow.

1. A study directed by Otis Graham, recently in the news and a part of CORI's effort to create a center focusing specifically on public policy, has been investigating the factors that led to the infamous Painted Cave fire and the measures adopted by the community to avoid future similar disasters;
2. The research by Wade Clark Roof, investigating the role religious institutions in Los Angeles have played in the rebuilding after the Los Angeles riots, is both timely and important.
3. A program conducted by Melvyn Semmel and Michael Gerber uniquely prepares graduate students in education for administrative roles in programs of special education. The uniqueness stems from the special attention given to the sorts of social problems with which graduates can expect to be confronted. This is done by involving students in relevant courses in social science topics. Special seminars are arranged with the instructors of such courses to expand the awareness of social problems likely to be anticipated by graduates in their future work and the range of solutions that might be available to them.
4. The ongoing studies by W. Douglas Morgan and Lloyd Mercer in economics and Dean Mann in Political Science relating to the administration and regulation of state water use continue to focus on issues vital to the State of California.

Introspection and Efficiency

This past year has been one of introspection. CORI had grown at the rate of more than 28 percent in the pervious four years as a consequence of the rapid expansion of proposal submissions and grants funded that followed the welcoming into CORI of former SPRI clients. This had led to workload problems that the slower growth of staff support had not easily accommodated. Clients previously pleased and attracted by the quality of CORI services were unhappy. Some new clients, who had expected better, were disappointed. Support that had been promised at the time of CORI taking over SPRI's assets, should such problems arise, was not provided. Financial crisis gripped the campus.

It was clear by the Spring 1992 meeting of the CORI Advisory Committee that serious efforts needed to be undertaken. At the end of the Spring Quarter, a five week, minute by minute, tally of individual CORI staff time devoted to a long list of routine activities was conducted. During the Fall Quarter of 1992, a survey was conducted of CORI clients to obtain their perspectives on the areas that CORI had problems and to seek remedies. Concurrently, a spreadsheet study, using the data on time allocation for each member of CORI's staff, was completed by the director. That spreadsheet fed in to an overall time allocation spreadsheet for the combined operation. Discussions were held between CORI staff and the director about ways to reduce work load and/or improve efficiency.

More than half of the fifteen clients that responded in writing to the survey had only good things to say about the way CORI was dealing with work load problems, although most would have appreciated more timely reports on the status of their grants. Others had specific complaints or suggestions as to what problems needed attention. Staff worked hard to get caught up. Interestingly, the spreadsheet analysis, while it took a lot of time, primarily tended to confirm the wisdom of the existing work allocation among CORI staff, although it did confirm which areas were in most need of assistance.

The staff time that was added through temporary augmentations by the Office of Research, matched by the commitment of CORI discretionary funds, and the diligent efforts of the staff to take control, solved the work load problem, at least for the current level of demand. It was found that the level of work completed per staff unit of time also had improved. By the Fall meeting of the Advisory Committee, it could be reported that most grant financial statements were out on time. CORI clients were reporting satisfaction with the way staff were able to respond to their problems. The Advisory Committee was pleased with the turnaround. CORI staff were pleased with themselves. For her part in this turnaround, one of CORI's staff responsible for CORI accounts was given a campus Citation of Excellence Award, for which one of the recommenders was one of CORI's clients most vocal about the workload problems.

The down side of the events that transpired was that almost all of CORI's discretionary funds were devoted to the staffing problem, in the face of inadequate support from the campus for workload. Because the final budget for CORI for the academic year was not known until well into December and the final outcome of the level of discretionary funding that would be available not known until considerably later, when we could be certain that the level of client services would not suffer further, very little of discretionary money was spent to stimulate proposal generation. What little was expected to be remaining was kept for a contingency fund after consultation with the Advisory Committee who agreed on the wisdom of the strategy.

The up side is that, because the staff were extremely cost conscious, and because CORI's MSO maintained exceedingly tight budgetary control, CORI has carryover funds that should make it possible to manage effectively for the coming year at the current level of service. CORI may even have some discretionary funding available to the new director, providing that assurances from the Office of Research in regard to funding for staff are able to be turned into actual support.

Plans for the Future

CORI will be getting a new director, effective July 1, 1993. If that individual is the person whom I expect it to be, CORI will be in good hands. Future plans will be up to him. My expectation is that CORI will maintain some old directions and branch in to some stimulating new ones. The new director will soon be presenting his own agenda.

Harold L. Votey, Jr.
June 29, 1993

CORI RESEARCH CENTERS

California Growth Project

Participants: Harvey Molotch, Director

Kee Warner, Graduate Student, Sociology

The California Growth Project has been involved in studies of the effects of growth control on the economy and housing stock of California communities. The primary focus has been a comparison of the land use regulations of Santa Barbara county, the City of Santa Monica, and the cluster of cities making up western Riverside County. Funded by the California Policy Seminar (a joint initiative of the State government and the University of California), the project seeks results that will help guide state and local land use policy-making.

Center for Global Studies

Director: Richard P. Appelbaum

*Advisory Board: William J. Ashby
Elliot A. Butler-Evans
John A. Ernest
Sarah Fenstermaker
Nancy e. Gallacher
Richard Hechtt
Gerhart Hoffmeister
Cynthia S. Kaplan
John A. Marcum
Mattison Mines
Georgio Persssinotto
Jati K. Sengupta
Kuo-Ch'ing Tu
Mayfair Yang*

*Daniel B. Botkin
Edward I. Donnerstein
John E. Estes
Haruhiro Fukui
Michael Goodchild
Paul Hernadi
Immanual C. Y. Hsu
Suzanne J. Levine
Connie McNeely
Lester Monts
Gerard Pigeon
Sandra Thompson
Harold L. Votey, Jr.*

The Center for Global Studies' primary objective is to promote globally-oriented, multi-disciplinary research in the social sciences and humanities, including both basic and policy oriented research. During this past year, the Center has completed a survey which has identified UCSB faculty whose research is global, transnational or comparative in nature. The Center has created a database of its survey findings to identify different issue areas and will be organizing a series of meetings around these issues in an effort to encourage interdisciplinary research, bring faculty members together to exchange research findings, and provide an important campus resource for faculty to generate new ideas and efforts. In addition, the Global Studies Center, in collaboration with the Interdisciplinary Humanities Centers will be sponsoring a three day conference, "Exile in Los Angeles," to be held during late 1994.

The Global Studies Center is in the process of developing a journal, tentatively titled "Global Competition and Change", which will be co-edited by Dr. Appelbaum and Jeffrey Henderson of the University of Manchester Business School, UK. The journal will have boards of contributing editors centered in Asia, North America and Europe.

Center for Labor Analysis

*Core Participants: Steven Trejo
Stephen Bronars
Ed Funkhouser
Jeffrey Grogger
Llad Phillips
Harold L. Votey, Jr.*

The Center for Labor Analysis seeks to encourage interaction among UCSB researchers in the field of labor economics. The Center fosters labor research in two ways: by maintaining and updating an inventory of the large, publicly-available data sets (e.g., Census, Current Population Survey, National Longitudinal Survey, etc.) that have become indispensable for doing empirical research in labor economics, and by organizing a seminar series in which prominent outside scholars as well as UCSB researchers present the results of their recent work. In addition to making seminar presentations, visitors meet with faculty and graduate students on a one-on-one basis in order to share ideas and discuss ongoing research projects.

Center for the Study of Business and Public Policy

*Core Participants: William S. Comanor
Stephen DeCanio
Ted Frech
M. Bruce Johnson
Clement G. Krouse*

The Center's aim is to stimulate discourse and research in matters of business and public policy by:

- creating a forum for scholarly research in applied economics
- sponsoring occasional papers and seminars on problems of particularly importance
- encouraging the exchange of experience and ideas between those involved in academic research and professional practice and,
- providing a research environment and funding support for graduate-level students.

Center for the Study of Discourse

Co-Directors: Sandra A. Thompson and John Du Bois

The Center for the Study of Discourse, established in 1989, was conceived to be a focus for the Linguistics Department's project to establish a Corpus of Spoken American English, as well as for ongoing research in the area of discourse across campus. The Center aims to coordinate and serve as a clearing house for interdisciplinary approaches to discourse research; to this end, the Center sponsors lectures and social events throughout the academic year. Several joint research projects are currently underway.

Center for the Study of Religion

Participants: Wade Clark Roof, Director

The Center for the Study of Religion's main objective is to provide support for multidisciplinary research efforts in the area of comparative religion and religion's impact on modern society. During the past year, research projects have examined a variety of issues including a study of biography and religion, a comparative study of Buddhists, Muslims and Evangelical Christians in California, and an ongoing study of the role of religious groups in the re-building of Los Angeles after the 1992 riots.

Health Data Research Facility

Participants: Ron Williams, Director
Peter Chen, Programmer Analyst
John Marinko, Programmer Analyst
Ellen Needham, Programmer Analyst
Niloufar Ameli, Programmer Analyst
Julie Kluss, Secretary

Over the last decade, the Health Data Research Facility has become internationally known as a center for applied research using vital statistics in public health data. The Health Data Research Facility is recognized as a source of expertise in the growing field of perinatal epidemiology, and has been credited with providing greater validity to the use of vital statistics records as a source of data for medical research. The Facility's short run objectives are to continue its development, implementation and dissemination of the Automated Vital Statistics System (AVSS) software which was developed at the Facility, and to further enhance methods for generating the data for research on births and perinatal and neonatal mortality. Now operational in nearly 300 sites in four states, AVSS is an on-line public health information system that electronically captures and communicates vital records and communicable disease data. Real-time data from AVSS is expected to drive immunization tracking systems that are beginning to evolve as a result of the Clinton Administration's public health initiatives. In addition to these efforts, the Health Data Research Facility annually publishes the *Maternal and Child Health Data Base Descriptive Narrative* which is used by hundreds of community-based agencies as well as by the Department of Health Services, the Office of Statewide Health Planning and Development, Kaiser Permanente, Bank of America, and Consumers Union.

MesoAmerican Research Center

Director: Anabel Ford

The goals of the MesoAmerican Research Center (MARC) are to advance research in the area of Mesoamerica and disseminate research results within the scientific and public arena. MARC consists of a loosely organized group of researchers whose activities include anthropological and archaeological research projects in Mexico, Guatemala, Belize, Salvador and Honduras. These projects have focused on social issues and their impacts on Mesoamerican cultures as well as issues of US/Mesoamerican immigration and eco tourism. MARC has sponsored conferences symposia, and workshops at UCSB and in Mesoamerica. Proceedings from these events have been published in the United States and Europe.

Pacific Rim Project on Mathematics Achievement

Participants: Hsiuu-Zu Ho, Director

Jules Zimmer, Co-Director

Chiang-Pei Wang, Beijing Institute of Education, Beijing, China

Soy-Yung Chiu, National Education College, Taipei, Taiwan

Yasuo Nakazawa, Shirayuri College, Tokyo, Japan

This research unit is concerned with cross-national investigations of factors that influence mathematics achievement in China, Japan, Taiwan, and the United States. Factors examined include demographic variables, related cognitive abilities, mathematics curriculum, and attitudes, expectations, and beliefs of parents, teachers and students. The investigations are focused on within-nation as well as between-nation variation.

WORKSHOPS, SEMINARS, CONFERENCES

Econometrics Seminars 1992-93 - Douglas Steigerwald, Workshop Coordinator

Fall Quarter

- October 7: Linda Tesar, UC Santa Barbara
"Home Bias and the Globalization of Securities Markets"
- October 21: Keunkwan Ryu, UC Los Angeles
"Group Duration Analysis of the Proportional Hazard Model"
- October 28: Gloria Gonzalez-Rivera, UC Riverside
"New Extensions of Risk: Conditional Versus Unconditional Moments"
- November 4: Jati Sengupta, UC Santa Barbara
"Market Volatility and Portfolio Efficiency"
- November 11: John Hsu, UC Santa Barbara
"Bayesian Analysis: An Alternative Approach"
- November 18: John Campbell, Princeton University
"Why Long Horizons? Asymptotic Power Against Persistent Alternatives"

Winter/Spring Quarter

- March 3: Maso Ogaki,
"Wealth Varying Intertemporal Elasticities of Substitution"
- March 10: Charles Manski, University of Wisconsin
"What Do We Learn from Controlled Experiments?"

Labor Economics Workshops - 1992-93 Steve Trejo, Workshop Coordinator

Fall Quarter

- September 28: Eric Eide, UC Santa Barbara
"Changes in College Skills and the Rise in the College Wage Premium"
- October 20: Jeff Grogger, UC Santa Barbara
"Does School Quality Explain the Present Black/White Wage Trend?"

- October 29: Kathryn Shaw, Carnegie Mellon
"Labor Supply, Human Capital Investment, and the Changing Distribution of Family Income"
- November 23: David Cutler, Harvard University
"Why Doesn't the Market Fully Insure Long-Term Care?"
- November 24: Duncan Thomas, Rand Corporation and Yale University
"On the Road: Marriage and Mobility in Malaysia"
- Spring Quarter
- March 11: Janet Currie, Massachusetts Institute of Technology
"Medicaid and Medical Care for Children"
- March 19: Shelly Lundberg, University of Washington
"On the Persistence of Racial Inequality"
- April 6: Steve Trejo, UC Santa Barbara
"The Decline in Immigrant Labor Market Skills: Did It Continue in the 1980s?"
- April 12: Derek Neal, University of Chicago
"Industry-Specific Human Capital: Evidence from Displaced Workers"
- April 26: Christopher Erickson, UC Los Angeles
"Collective Bargaining in the Aerospace Industry in the 1980s"
- May 3: Kathleen McGarry, UC Los Angeles
"Factors in Determining Participation of the Elderly in SSI"
- May 10: Paul Gertler, Rand Institute
"Moral Hazard in Medical Partnerships"
- May 17: Audrey Light, Hoover Institution
"Job Change Patterns and the Wages of Young Men"
- May 24: Nick Ronan, UC Santa Barbara
"Family Structure and the Intergenerational Transmission of Education"
- June 7: Bruce Fallick, UC Los Angeles
"On the New Minimum Wage Research"

Competition Policy in a Global Economy Conferences
William Comanor, Conference Director
Santa Barbara, California
January 9 - January 12, 1993
&
Paris, France
May 13 - May 15, 1993

Attending this conference, which was funded from a grant from the Japan Foundation, were leading scholars from Japan, the US, Canada, and Europe. In attendance were:

Akira Gota, Department of Economics, Hitotsubashi University, Tokyo, Japan

A. Edward Safarian, Business Economics, Center for International Studies,
University of Toronto, Ontario, Canada

Kotaro Suzumura, Professor of Economic Systems Analysis, Institute of Economic
Research, Hitotsubashi University, Tokyo, Japan

Annette, Bongardt, International Center for Economic Research, Torino, Italy

Werner Meissner, Johann Wolfgang Goethe University, Frankfurt, Germany

Edward Safarian, Center for International Studies, University of Toronto, Ontario,
Canada

Leonard Waverman, Center for International Studies, University of Toronto, Ontario,
Canada

Eleanor Fox, School of Law, New York University, NY

Calvin Goldman, University of Toronto, Ontario, Canada

Stephen Martin, Department of Economics, European University Institute, Florence,
Italy

In attendance at the second "Competition Policy in a Global Economy" conference were:

Akira Gota, Department of Economics, Hitotsubashi University, Tokyo, Japan

A. Edward Safarian, Business Economics, Center for International Studies,
University of Toronto, Ontario, Canada

Kotaro Suzumura, Professor of Economic Systems Analysis, Institute of Economic
Research, Hitotsubashi University, Tokyo, Japan

Annette, Bongardt, International Center for Economic Research, Torino, Italy

Leonard Waverman, Center for International Studies, University of Toronto, Ontario,
Canada

Stephen Martin, Department of Economics, European University Institute, Florence,
Italy

Neil Campbell, McMillan Binch, Barristers & Solicitors, Toronto, Ontario, Canada

Hiroyuki Odagiri, Institute of Socio-Economic Planning, University of Tsukuba,
Ibaraki, Japan

Janusz Ordover, CV Starr Center for Applied Economics, New York University, NY

RESEARCH IN PROGRESS
JULY 1992-JUNE 1993

APPELBAUM, RICHARD, Principal Investigator

BONACICH, EDNA, Co-Principal Investigator

Garment Manufacturing in Los Angeles: Race Ethnicity, Immigration, and Gender in a Changing Industry

John Randolph & Doris Haynes Foundation: APPELBAUM/HAYNES

11/21/91-6/30/93

The principal investigators have examined all layers of the apparel industry from retailing of goods to factory production. The research, with its focus on Los Angeles, entailed a combination of in-depth interviews, surveys, and ethnography, and was particularly concerned with spatially-concentrated networks. This research involved extensive use of geographic information systems, and mapped all manufacturing and contracting activities in the Los Angeles area.

APPELBAUM, RICHARD, Principal Investigator

Commodity Chains and Industrial Districts in the Pacific Rim: A Comparative Study of Three Industries

Pacific Rim Research Program: APPELBAUM/PAC RIM

7/1/90-6/30/94

This project involves a multi-university, international interdisciplinary group who focus on the "commodity chain" of globalized networks involving design, production and marketing of a single product, and "industrial districts" which focuses on spatial interdependencies. Two approaches are being used: a macro-level study of trade and production data within the Pacific Rim, utilizing geographic information systems (GIS) as a basis for spatial-based network and cluster analyses; and descriptive case studies of selected industries in Seoul, Taipei, Hong Kong, Tijuana, and Los Angeles.

BADASH, LAWRENCE, Principal Investigator

Tale of a Nuclear Winter

National Science Foundation: DIR90-12305

9/1/93-8/31/92

This project studied (1) the ways in which several scientific disciplines came together to enable the nuclear winter phenomenon to rise from the computer printout, (2) the media treatment of the developing subject, and (3) the political reaction to calls to reduce the American nuclear arsenal as a means of precluding this particular disaster.

BIELBY, WILLIAM T., Principal Investigator
DENISE BIELBY, Co -principal Investigator
From Market to Hierarchy: Industrial Change and the Employment Relation in Television Production

National Science Foundation: NSF SES89-10039

The principal investigators have examined how changing industrial and organization context, technology, and business conditions shape the organization of work and careers in prime time television production. In particular, they focused on the causes and consequences of a shift in the television writer's employment relation from *market*-based freelance arrangements to *hierarchically*-based staff arrangements. Hypotheses were derived from transaction cost theories of industrial organization, models of cumulative advantage in career trajectories, and recently developed approaches to the study of the production of popular culture.

BOVE, FREDERICK, Principal Investigator
State Evolution on the South Coast of Guatemala
National Science Foundation: NSF BNS-9108926
7/15/91-8/31/93

Previous research on the Pacific Coast of Guatemala has produced evidence of the local development of an early state-like polity centered at Balberta which gave way to a more permanent regional organization by the Late Classic period. This project examined the unit by focusing on social and political variables as expressed in settlement pattern changes and economic variables dealing with production and exchange, and relationships to the greater sociopolitical context. A two year field and laboratory project of regional survey, mapping, and methodological excavations provided a body of data to comprehend the origins of the state in this poorly known area.

COMANOR, WILLIAM , Principal Investigator
Competition Policy in a Global Economy
The Japan Foundation: AR91-0051
3/1/92-12/31/94

This project brings together leading scholars in Japan, the USA, the European Community and Canada in a project aimed at analyzing conflicts in domestic competition policies and designing a set of policy alternatives to ease real friction and to improve trade and FDI flows and innovations. The research will analyze the underlying economic and strategic meaning of domestic competition law in a global economy.

DEACON, ROBERT , Principal Investigator
Political Stability, Security of Tenure, and Natural Resource Conservation in Developing Countries
4/1/92-3/31/94

(DEACON - continued)

This research is studying the way tropical forests are used in developing countries, and is assessing empirically how stable political and legal institutions affect observed measures of the way these resources are used. Empirical analysis, based on the theoretical framework, will compare the principal hypothesis to two alternatives: that tropical deforestation and similar phenomena are caused by the process of economic growth; and that the primary cause of these outcomes is population pressure.

DEACON, ROBERT , Principal Investigator

*The Political Economy of Natural Resources in Developing Countries:
Selected Studies*

National Science Foundation: NSF SES91-21859

4/1/93-3/31/95

The aim of the research is to enhance knowledge of the political determinants of insecure ownership and to quantify the environmental effects that result. Through seven empirical studies, the principal investigator will examine resource development and extraction, and the effect of ownership insecurity on the frequency and structure of transactions involving natural and environmental assets. The objects of analysis are the pattern of deforestation that results from commercial logging, the incentive to invest in plantation forests, the mix of commercial products obtained from forests, the extent of fossil fuel exploration in developing countries, and the rate at which fossil fuel resources are extracted.

FORD, ANABEL, Principal Investigator

Maya Development in the Upper Belize River Area

National Science Foundation: NSF BNS-9024104

4/15/91-12/31/92

The Belize River Archaeological Settlement Survey (BRASS), located in the eastern periphery of the central Maya lowlands has developed an important settlement survey and excavation data base pertaining to domestic activities as reflected in residential middens. This research supported the phase of broad horizontal residential unit excavation of previously tested units. The collection from these residential units are providing a basis for accurately describing and interpreting the organization of residential production and consumption activities in the Maya area.

FORD, ANABEL, Principal Investigator

*Household Economic Organization and Community Integration: The Basis of
Social Complexity in the Central Maya Lowlands*

National Science Foundation: NSF BNS91-21701

1/1/92-11/30/93

Building on a solid regional data base on the archaeological settlement in the Belize River area, this research has developed an interpretation of the operation of regional, local and community tiers of ancient Maya society. This principal

investigator has completed intensive excavations at representative residential units and evaluated production and consumption within and between major landform zones by residential size and rank.

FORD, ANABEL , Principal Investigator

Environmental and Social Distinctions in Chipped Stone Assemblage at Residential Units in the Belize River Area (REU Supplement to Grant No. BNS-9121701)

National Science Foundation: NSF DBS-912701

(FORD - continued)

3/1/92-6/30/93

Supplemental funds were provided to undergraduate honors student Greg Morre to support research on the chipped stone assemblages from ancient Maya house sites. His work was in collaboration with the Dr. Ford's BRASS project.

FUKUI, HARUHIRO, Principal Investigator

Informal Politics, Democracy, and Patterns of Economic Development in China, Japan, South Korea, and Taiwan

Pacific Rim Research Program: FUKUI/PAC RIM

7/1/90-6/30/94

This project is designed to investigate forms and functions of informal politics, i.e., politics not subject to control by formal authorities. In the first phase, (1991-92), a set of papers were prepared on informal politics of elite recruitment in China, Japan, South Korea, and Taiwan. A joint symposium was held in Hong Kong in August 1992 and papers presented at the symposium are being revised for future publication..

GERBER, MICHAEL, Principal Investigator

SEMMELE, MELVIN, Principal Investigator

SE/PREP: A Project for Doctoral-Level Leadership Personnel Preparation in Collaboration with the Social Sciences

U.S. Department of Education: H029D20030

9/1/92-8/31/97

This five year project will develop a new doctoral training model at UC Santa Barbara for preparing researchers, teachers, trainers, and administrative leaders in the field of education for individuals with disabilities. During this first year, project faculty have recruited doctoral students who wish to pursue careers related to education of individuals with disabilities, and have established a national network of university programs with large ethnic minority student enrollments to refer potential leadership trainees. In addition, graduate students on this campus have been recruited to serve as research mentors for minority undergraduates. The mentorship/recruitment program will provide early research experience for potential doctoral students as well as research leadership training for students enrolled in the doctoral program.

INGHAM, JANIS, Principal Investigator
Predicting Therapy Outcome in Children Who Stutter
CAL STATE FULLERTON: 8120
9/1/93-8/31/95

This project is part of a grant funded by the National Institute of Health which is being directed by Dr. Glyndon Riley of the California State University of Fullerton. Dr. Ingham will be designing and conducting a range of procedures for treatment of stuttering in children at the UCSB Speech and Hearing Clinic. She will also design and conduct the principal investigations, train the research assistants and clinical specialists from UCSB and Cal State Fullerton in regard to Extended Length of Utterance Treatment procedures, and oversee the assessment and treatment of children at the clinic. Dr. Ingham and a speech and hearing specialist will collect and analyze speech samples obtained from on and off-clinic sites.

INGHAM, ROGER, Principal Investigator
Time Interval Investigations of Stuttering Measurement
National Institute of Health: PHS 5 R01 DC00060-03
12/1/90-11/30/93

This grant, currently in its third year, has been investigating procedures, via the use of artificial neural networks, that will possibly lead to a means of identifying intervals of speech that judges agree contain stuttering. The goal of this research is to develop a reliable method for measuring chronic stuttering in the continuous speech of persons with this speech disorder.

JOCHIM, MICHAEL, Principal Investigator
Regional Settlement Systems in Southwest Germany
National Science Foundation: NSF BNS92-01023
2/1/92-7/31/94

This project is the initial phase of a long-term study of regional patterns of settlement and land use during the Paleolithic, Mesolithic and Neolithic of southwestern Germany. This first phase has two components: 1) the development of a database of archaeological, environmental, paleoenvironmental, and modern land use information for a 40 x 100 kilometer study area extending from the Danube south to the Alps; and 2) a surface survey of a 45 square kilometer portion of the study area adjacent to the Federsee.

KAPLAN, CYNTHIA, Principal Investigator
Political Participation in the Soviet Union: Estonia and the RSFSR
National Science Foundation: NSF SES9122389
2/1/92-1/31/94

By using a two stage sample drawn from ethnically diverse areas of the former Soviet Union, this research is assessing the influence of structural and cultural factors on the nature of mass-elite relations in the emergence of new political systems. Respondents to a survey drawn from Estonia, Russian and the non-

Russian Autonomous Republics of the RSFSR are being examined for the impact of ethnicity on political behavior during a period of economic and political change.

KAPLAN, CYNTHIA, Principal Investigator
BRADY, HENRY, Co-Principal Investigator
Russian Nationalism and the Politics of Transition
U.S. Institute of Peace: USIP04992F
4/1/93-8/31/94

This project will examine Russian nationalism and ethnicity in Russia, Tatarstan, and Estonia, based on survey interviews administered in 1991 to almost 20,000 respondents in those areas, and 6,500 survey interviews taken in 1992. The researchers will compare the nature and development of Russian nationalism in Russia, Tatarstan, and Estonia, and provide an assessment of the potential for nationalist violence and how policies can be devised for resolving ethnic conflicts peacefully.

LOOMIS, JACK, Principal Investigator
GOLLEDGE, REGINALD, Co-Principal Investigator
KLATZKY, ROBERTA, Co-Principal Investigator
Navigation Aid for the Visually Impaired
Public Health Service: R01EY06740
8/1/92-7/31/97

This project consists of both basic and applied research. The applied research will be concentrated on developing a microcomputer-based navigation aid for the visually impaired. This device will inform the visually impaired user of his or her location and provide information about the local environment. The basic research will examine the inherent limitations on navigation without sight and the implications, whether positive or negative, of device-aided navigation for learning about complex environments.

LOVE, MICHAEL , Principal Investigator
VOORHIES, BARBARA , Co-Principal Investigator
Archaeological Exploration of the Ujuxte Region, Pacific Guatemala
Heinz Charitable Trust: HEINZ/LOVE
2/1/92-4/1/93

This principal investigator has conducted an intensive survey of approximately 20 square kilometers surrounding the archaeological site of Ujuxte on the Pacific coast of Guatemala. This survey has evaluated the density of settlement in all periods and the types of sites, surface conditions, and specific conditions of land tenure. A less intensive reconnaissance of approximately 100 square kilometers of territory surrounding Ujuxte was also made to assess the nature and conditions of roads, land tenure, types of crops to be encountered, and the annual cycles of these crops.

MCDONNELL, LORRAINE, Principal Investigator*Assessment Policy and Education Policy*

UC Los Angeles (CRESST): R117G10027

12/1/92-11/30/93

As part of the previous work undertaken for CRESST, the principal investigator is examining the implementation of four state assessment initiatives in local schools and classrooms. This study focuses on the expectations that policy makers hold for different assessment strategies and the factors that shape local response to those initiatives.

MITHUN, MARIANNE, Principal Investigator*Barbareno Chumash Grammar*

National Science Foundation: NSF BNS-9011018

11/1/92-10/31/94

The goal of this project is to prepare a functionally-based reference grammar of Barbareno Chumash. The research participants have organized manuscripts and have been entering them into a computer in a form that can be sorted by a concordance program, making it possible to extract all instances of morphemes in the corpus, in context, with literal and free translations. During the final year of the project, these studies will be worked into a comprehensive grammar of the Barbareno Chumash language.

ROOF, WADE CLARK, Principal Investigator*Biography and Faith: Narrative Accounts*

Lilly Endowment, Incorporated: Lilly 910575

9/1/91-8/31/93

This principal investigator has studied baby boomers (born from 1946-62) through an in depth examination of their religious and spiritual lives. This research has analyzed how baby boomers' social experiences from growing up in the 1960s influenced their attitudes, and how those experiences continue to shape their values and form a distinct generational experience. One aspect of the research has focused on what the words "religious" and "spiritual" mean to boomers. Another aspect has reviewed their occupational histories and how these work experiences and choices have been shaped by their particular spiritual values.

ROOF, WADE CLARK, Principal Investigator*Renegotiating the Social Contract: Religion and Public Life in Los Angeles*

John Randolph & Doris Haynes Foundation: Haynes Fnd/Roof

1/1/93-12/31/93

This project has focused on the activities of religious leaders as they work with other community leaders to create civic peace within Los Angeles' racially diverse culture, and how these activities have been shaped by the 1992 riots. The objectives include an examination of the political and economic roles of religious leaders and their interaction with community leaders on schooling, policing and

economic development issues, the degree of cooperation among religious leaders and the models of community and regional development to which they are committed, and finally, an analysis of the rhetoric used by religious leaders as they communicate across cultural boundaries on the pressing needs of their community.

ROOF, WADE CLARK, Principal Investigator

Religious Outsiders on the West Coast

The Pew Charitable Trusts: PRE CTR TR

12/2/92-12/31/95

The purpose of this research is to study religious groups regarded as "outsiders" and their relationships to other groups viewed as religious "insiders," as they have emerged on the California West Coast. Three groups are singled out for focused consideration--Buddhists, Muslims, and Evangelical Christians. The research will include: 1) a historical study of how these groups have evolved; 2) an analysis of cultural and religious styles; 3) an analysis of how "outsiders" are perceived by old-line Protestants, Roman Catholics, and Jews; and 4) an analysis of views of selected community leaders, religious leaders, seminary presidents, and journalists.

STONICH, SUSAN, Principal Investigator,

BORT, JOHN, Co-Principal Investigator (East Carolina University)

The Social and Environmental Consequences of Shrimp Mariculture Development in Central America

Pacific Rim Research Program: PAC RIM/Stonich

7/1/92-6/30/94

The principal investigators are studying the interrelated social, economic, and environmental effects of the expansion of shrimp mariculture along the Pacific Coast of Central America. Using an approach which integrates ethnographic, geographic and survey methods, this research combines human ecological and political-economic analysis to determine the multilevel linkages between social processes and environmental destruction and the associated policy implications. This project is designed to facilitate planning of larger interdisciplinary proposals which will be submitted to a variety of private and public agencies..

SUTTON, JOHN , Principal Investigator

The Dynamics of Denominationalism in American Protestantism, 1890-1980

Lilly Endowment Incorporated: LILLY 900123

6/1/90-6/30/93

The purpose of this project is to understand the patterns of denominationalism in American Protestantism from the period 1890 to 1990. The Principal Investigator is gathering a data set on the formation of American Protestant denominations by analyzing the life histories of 175 mainstream Protestant denominations. This information will specifically focus on schisms through which new denominations were created, and mergers, through which old denominations were dissolved.

This quantitative life history data will be supplemented with contextual information about specific merger and schism events from archival and secondary sources.

SUTTON, JOHN , Principal Investigator

Prisons, Asylums and the Welfare State: Patterns of Social Control in Five Common-Law Countries

National Science Foundation: NSF SES-9122424

7/1/92-6/30/94

This project is a comparative study of inmate capacities in prisons and mental hospitals against the background of welfare politics in five common-law countries (the U.S., the United Kingdom, Canada, Australia, and New Zealand) over the period 1955-1985. The study is assembling quantitative data on institutional capacities, welfare benefits, and other independent variables. Dynamic models of institutional growth and decline are being estimated, using pooled time-series cross-section techniques.

THOMPSON, Sandra, Principal Investigator

DUBOIS, Jack, Co-Principal Investigator

CHAFE, Wallace, Co-Principal Investigator

Corpus of Spoken American English

National Endowment for the Humanities: RT2143392

7/1/92-6/30/94

This project will create a large computerized database of 1 million words of spoken American English, and disseminate it in both a printed and an interactive microcomputer format that will allow simultaneous access to transcription and sound. This database is expected to generate a broad range of new research in language and speech. The creation of the Corpus of Spoken American English will be coordinated with a worldwide effort to compile an International Corpus of English.

TOOBY, John, Principal Investigator

PYI: Evolutionary Biology and Human Psychological Adaptation

National Science Foundation: BNS-9157449

James S. McDonnell Foundation: Matching Funds for PYI Award

BNS9157449

7/1/92-7/31/96

The research plan for this project encompasses the mapping of human cognitive mechanisms (adaptive specializations) through the application of cognitive experimental methods and cross-cultural studies to models of adaptive problems derived from evolutionary biology and paleoanthropology. Specific adaptive problems being investigated include cooperation, coalition formation, threat interpretation, bluff detection, probabilistic reasoning, incest avoidance, and contagion avoidance.

WALKER, PHILLIP , Principal Investigator
Native American Graves Protection and Repatriation Act of 1990
Department of the Navy: N69711-92-LT-2023
9/21/92-12/1/93

The purpose of the San Clemente Island Native American Graves Protection and Repatriation Act project is to inventory and summarize all archaeological collections that have been removed from San Clemente Island. In addition, the project will determine who, if anyone, is culturally affiliated with these collections in preparation for future repatriation of the archaeological materials. The project entails contacting every museum or facility that curates San Clemente Island materials, visiting the collections to perform the inventory and/or summary, and creating a final report on the research.

WILLIAMS, RONALD , Principal Investigator
Maternal and Child Health Database (Renewal)
California Department of Health: MCH 91-12638
7/1/92-6/30/94

Research continues on the Maternal and Child Health Database project, initiated in 1976. Efforts will be concentrated on maintaining and augmenting the hospital specific MCH Database for California cities. An updated Maternal and Child Health Data Base Statistical Appendix and Descriptive Narrative will be made available annually for the funding period.

YANG, MAYFAIR , Principal Investigator
Voluntary Associations and the Emergence of Civil Society in China
National Science Foundation: NSF BNS-9057505
8/15/90-7/31/94

This Presidential Young Investigator Award project is in its second year of funding. During this funding period, the Principal Investigator has been concentrating on two field sites and two fieldwork topics. The first topic has focused on the lineage organization and ritual revival in a rural town outside the city of Wenzhou, Zhejiang Province and the second on film criticism and reception among the masses in urban and rural Xi'an, Shaanxi Province.

CORI
STATISTICAL SUMMARIES
1992-1993

RICHARD APPELBAUM
Pacific Rim Research Program
John Randolph and Doris Haynes Foundation

Publications

"Space and the Global Economy: How Forces of Dispersal and Concentration are Reshaping the Contemporary Los Angeles Garment Industry." In E. Carville, L. Hochberg, and D. Miller (eds.), Geographic Information Systems: A Handbook for the Social Sciences, NY: Basil Blackwell. Forthcoming 1993. Co-author: Christopher G. Arnold.

"Commodity Chains and Industrial Restructuring in the Pacific Rim: Garment Trade and Manufacturing." In G. Gereffi and M. Korzeniewicz (eds.), Commodity Chains and Global Capitalism, Greenwood Press. 1993. Co-authors: David Smith and Brad Christerson.

"Points of Profit in the Garment Commodity Chain." In E. Bonacich, L. Cheng, N. Chinchilla, N. Hamilton, and P. Ong (eds.), The Apparel Industry in the Pacific Rim, Caribbean Basin, and Latin America, Philadelphia, PA: Temple University Press. Forthcoming 1993. Co-author: Gary Gereffi.

States and Development in the Asian Pacific Rim. R. Appelbaum & J. Henderson(eds.) Newbury Park: Sage. 1992.

"Situating the State in the East Asian Development Process." In States and Development in the East Asian Pacific Rim. R. Appelbaum & J. Henderson (eds.), Newbury Park: Sage. 1992. Co-author: Jeffrey Henderson.

Below is a list of other publications by participantson the Pacific Rim Research Program grant "Commodity Chains and Industrial Districts in the Pacific Rim: A Comparative Study of Three Industries."

Chon, Soohyn. "Development of the Semiconductor Industry in Korea: A Commodity Chan Analysis." Under revision.

Smith David, UC Riverside: "Technology, Commodity Chains and Global Inequality: The South Korean Case in the 1960s." Submitted to *Social Force*.

Presentations, Lectures

"The Ethnic Geography of Flexible Capitalism: A Look Into the 21st Century," "Translating Cultures: The Future of Multiculturalism?" UCSB Interdisciplinary Humanities Center (and other co-sponsors). November 11-14, 1992.

"Changing Patterns of Trade in the Global Economy." Presentation on the Impact of the New World Alignment on the Far East panel, Urban and Regional Research Section of the International Sociological Association, (UCLA) annual meetings, May 24-26, 1992.

"Space and the Global Economy: How the Forces of Dispersal and Concentration are Shaping the Contemporary Los Angeles Garment Industry," Presented at the Pacific Sociological Association annual meetings, Oakland, California. April 9-12, 1992.

LAWRENCE BADASH
Universitywide Energy Research Group

Publications

- "A story too good to kill: The 'nuclear' explosion in San Francisco Bay," Knowledge, 14: 356-71. June 1993. Co-authored by Richard G. Hewlett.
Scientists and the Development of Nuclear Weapons. Submitted to Humanities Press.

WILLIAM BIELBY & DENISE BIELBY
National Science Foundation

Publications (Denise Bielby and William Bielby)

- The 1993 Hollywood Writers' Report: A Survey of the Employment of Writers in the Film, Broadcast, and Cable Industries for the Period 1987-1991. West Hollywood, CA: Writers Guild of America West. 1993.
- "Cumulative Disadvantage in an Unstructured Labor Market: Gender Differences in the Careers of Television Writers." Work and Occupations, October 1992. Reprinted in Jerry A. Jacobs (ed.), Sex, Segregation at Work. Sage Publications. Forthcoming.
- "The Hollywood 'Graylist'? Audience Demographics and Age Stratification Among Television Writers." In M.G. Cantor and C. Zollars (eds.), Current Research on Occupations and Professions (Creators of Culture) Greenwich, CT, Jai Press. Forthcoming

Presentations, Lectures (Denise Bielby and William Bielby)

- "The Hollywood 'Graylist'? Age, Experience, and Access to Employment for Television Writers." Presented at the 18th Annual Conference on Social Theory, Politics, and the Arts. Annenberg School for Communication, University of Pennsylvania. October, 1992.

ANABEL FORD -
MesoAmerican Research Center/MARC
National Science Foundation

Publications

- Decipherment and the Study of the Ancient Maya. The Language of Maya Hieroglyphs: Archaeological, Linguistic and Art Historical Approaches. New Scholar, Volume 12. University of California, Santa Barbara. In press. Co-author: Martha Macri.
- "Review and Revision of Ceramic Analysis: Results of the 1991 Maya Ceramic Workshop." Ceramica de Cultura Maya 16:24-29, 1992. Co-authors: Nicole Woodman, and Lisa Lucero
- "Results of the 1991 Maya Ceramic Workshop: Creating a New Comparative Standard." Mexicon 14:118-121, 1992. Co-authors: Nicole Woodman, and Lisa Lucero.
- "El Pilar: Rediscovering an Ancient Maya Center." Belize Today 6(10):49-52, 1992.
- "Prehistoric Maya Settlement Patterns in the Upper Belize River Area: Initial Results of the Belize River Archaeological Settlement Survey". Journal of Field Archaeology 19:35-49, 1992. Co-author: Scott Fedick.

Presentations, Lectures

- "Equity in Employment: Why the Best Men Still Win." Presented at the 91st Annual Meetings of the American Anthropological Association, San Francisco, 1992. With Anne Hundt.
- "Rediscovering the Ancient Maya Center of El Pilar: Initiating a Program to Develop an Interpretive Archaeological Reserve in Belize." Presented at La Mesa Redondo, Palenque, Chiapas Mexico, 1993.
- "Organization of Domestic Activities in the Maya Area: Initial Results of Intensive Excavations in the Belize River Area." Presented at the 58th Annual Meetings of the Society for American Archaeology, St. Louis, 1993. With Kirsten Olson.

HARUHIRO FUKUI -
Pacific Rim Research Program

Publications

- "Elite Recruitment and Political Leadership." PS: Political Science and Politics, XXX:1, pp. 25-36. March 1992. Co-author: Shigeko N. Fukai.

Presentations, Lectures

- "Organizing Election Campaigns in Urban and Rural Japan", Presented at the Workshop on Japanese-Style Democracy, Panama City Beach, Florida, October 16-17, 1992; and Southern Japan Seminar, Panama City Beach. October 18, 1992. With Shigeko N. Fukai.
- "Japanese Elections and Money Politics." Invited lecture presented at the University of Virginia, Charlottesville, VA, November 23, 1992.
- "Patterns of Informal Politics and Economic Development in the People's Republic of China, Taiwan, and South Korea," Chair of panel. at the 45th Annual Meeting of the Association for Asian Studies, Los Angeles, March 24-28, 1993.
- "Korea's Construction Industry: The Impact of Informal Politics on the Allocation of Resources." Presentation by Soohyun Chun at the 45th Annual Meeting of the Association for Asian Studies, Los Angeles. March 24-28, 1993.
- "Election Campaigning in Urban and Rural Japan." Presentation by Shigeko Nimiya Fukai at the 45th Annual Meeting of the Association for Asian Studies, Los Angeles. March 24-28, 1993.

OTIS GRAHAM
Farmers Insurance Group

Publications

- Sifting Through the Ashes: History Lessons Learned From the Painted Cave Fire. In press, 1993.

MIKE JOCHIM
National Science Foundation

Publications

- "Archaeologische Prospektion im Rederseegebiet." Archaeologische Ausgrabungen in Baden-Wuerttemberg 1992. pp. 46-49. Stuttgart: Konrad Theiss Verlag, 1993.

CYNTHIA KAPLAN
National Science Foundation

Presentations

"Transition in Russia: Elite Cleavages and Political Organizations." Presentation at the Annual Meeting of the American Political Science Association, Palmer House, Chicago, IL. September 3, 1992. Henry E. Brady, William Smirnov, Vladimir Andreenkov.

JACK LOOMIS
REGINALD GOLLEDGE
ROBERTA KLATZKY
Public Health Service: The National Eye Institute

Publications

- "Non-Visual Navigation by Blind and Sighted: Assessment of Path Integration Ability". Journal of Experimental Psychology: General, 122, 73-91, 1993. Co-authors: R.L. Klatzky, R.G. Golledge, J.C. Cicinelli, J.W. Pellegrino, and P.A. Fry.
- "The Encoding-Error Model of Pathway Completion Without Vision". Geographical Analysis, in press. Co-authors: N. Fujita, R.L. Klatzky, and R.G. Golledge.
- "Performance of Blind and Sighted in Spatial Tasks". Journal of Visual Impairment & Blindness, in press. Co-authors: R.L. Klatzky, R.G. Golledge, J.G. Cicinelli and J.W. Pellegrino.
- "Personal Guidance System for the Visually Impaired Using GPS, GIS, and VR Technologies". Electronic Proceedings of the Conference on Virtual Reality and Persons with Disabilities, June 17-18, Millbrae, CA. 1993. Co-authors: R.G. Golledge and R.L. Klatzky.

Presentations

"Personal Guidance System for the Visually Impaired Using GPS, GIS, and VR Technologies". Presented at the Conference on Virtual Reality and Persons with Disabilities, June 17-18, Millbrae, CA. 1993. With R.G. Golledge and R.L. Klatzky.

LORRAINE MCDONNELL
Department of Education/UCLA CRESST

Presentations

"Policymakers' Beliefs About Assessment." Presented at the CRESST Annual Conference, UC Los Angeles. September 10, 1992.

MARIANNE MITHUN
National Science Foundation

Publications

- "The Affixation of Pronouns," Grammatical Categories and Grammaticalization. S. Romaine and N. Vincent (eds.) London: Philological Society and Blackwell's. In Press.
- "Hodan Languages," The Encyclopedia of Language and Linguistics. Edinburgh: Pergamon Press and Aberdeen University Press. In Press.

Presentations, Lectures

- "The Preservation of North American Indian Languages". Presented at the Plenary Symposium, Linguistic Society of America, Los Angeles. 1993.
- "The Decline of Linguistic Diversity: An Intellectual Loss for Us All". Invited lecture, Faculty of Letters, University of Hokkaido, Sapporo, Japan. 1993.
- "The Principled Emergence of Contrastive Glottal Stop in Barbareno Chumash" . Presented at the Hokan-Penutian Conference, Ohio State University, Columbus. 1993. With Tsuyoshi Ono and Suzanne Wash.
- "Areal Implications of Expressive Coda Glottalization in Southern California". Presented at the Hokan-Penutian Conference, Ohio State University, Columbus. 1993. With Tsuyoshi Ono and Suzanne Wash.
- "The Embedding of Cultural Patterns in the Evolution of Grammatical Categories." Invited lecture, Institute of the Sociology of Religion, University of Copenhagen. 1993.
- "What Speakers Have to Tell Us if We Will Only Listen." Presidential Address, Society for the Study of the Indigenous Languages of the Americas. American Anthropological Association, Washington, D.C. 1993.
- "One Story From Two Sides: A Comparison of the Barbareno Chumash Fieldnotes of J.P. Harrington Recorded During His Work with Mary Yee, and the Journal Notes of Mary Yee Recorded During Her Work with J.P. Harrington." Presented at the Annual Meeting, California Indian Conference. Santa Barbara. 1993. With Ernestine McGovran (daughter of Mary Yee).
- "Languages of the New World in the Quincentenary Year." Keynote address, Mid-America Linguistics Conference. University of Missouri, Columbia. 1992.

HARVEY MOLOTCH
California Growth Project

Publications

- "The Political Economy of Growth Machines", Journal of Urban Affairs, vol 15, no 1, pp 29-53. 1993.
- "Information in the Marketplace: Media Explanations of the '87 Crash". Social Problems. June 1993. Co-author: Kee Warner.
- "L.A. as Product." In Allen Scott and Edward Soja (eds.) L.A. Studies. Berkeley: University of California Press. Forthcoming.
- "The Space of Lefebvre," review essay in Theory and Society. Forthcoming.
- Review essay, Michael Burawoy, Ethnography Unbound, in Contemporary Sociology. Forthcoming.
- "The Compulsion of Proximity" in Deirdre Boden and Roger Friedland (eds.), Nowhere: Time, Space and Social Theory, Berkeley and Los Angeles: University of California Press. Forthcoming.

MARY I. O'CONNOR

CORI

Publications:

- "The Pilgrimage to Magdalena, Sonora, Mexico." In Anthropology of Religion: A Handbook of Theory and Method, S. Glazier (ed.), Greenwood Press, in press.
- "Lenten Ceremonials in Two Villages of the Mayo Valley." In Easter Ceremonies in Northwest Mexico, N. Ross Crumrine and R. B. Spicer (eds.), University of America Press, in press.

WADE CLARK ROOF

Lilly Foundation

John Randolph and Doris Haynes Foundation

Pew Charitable Trusts

Publications

- A Generation of Seekers, San Francisco: Harper San Francisco. 1993. Utilizes some of the data from the Lilly project.
- "Cultural Conflicts and Identity: Second Generation Hispanics in the United States," Social Compass. Forthcoming. Co-author: Christel Manning.
- "Religion and Narrative," Review of Religious Research 34, pp. 297-310. June 1993.

MELVYN I. SEMMEL

Department of Education

Publications

- "Teacher Perceptions of the Classroom Behaviors of Nominated Handicapped and Non-handicapped Students in China." Journal of Special Education, vol. 25, no. 4, 1992. Co-author: X. Gao.
- "Educating the Nation's Handicapped Children." In K. Lloyd (ed.), Risking American Education Competitiveness in a Global Economy: Federal Education and Training Policies, 1980-90. Arlington, VA: Center for Education Competitiveness, in press. Co-authors: N. Zigmond and K. Lloyd.
- "Why Do Educational Reform Commissions Fail to Address Special Education?" In R. Ginsberg & D. N. Plank (eds.), Commissions, Reports, and Reforms: Fashioning Educational Policy in the 1980's and Beyond. New York, NY: Praeger Pub., in press.
- "The Effects of Story Prompts on Narrative Production of Students with and Without Learning Disabilities." Submitted to Learning Disabilities Quarterly.
- "Speed Enhancement for Individuals with Moderate Mental Retardation." Submitted to International Journal of Special Education. Co-author: M. Margalit et. al.
- "Teacher Attitudes Toward the Full Inclusion of Students with Severe Disabilities." Submitted to Exceptional Children. Co-authors: K. Kelly, K. Collins, and G. Manset.

Presentations, Lectures

- "Special Effects on Special Education for Learning Handicapped Elementary and Junior High Students." Presented at the Pacific Coast Research Conference, Redondo Beach, CA.
- "Dynamath: A Demonstration." Presented at the CEC Annual Conference, San Antonio, TX.
- "School Effects on Special Education for Learning Handicapped Students." Presented at the American Education Research Association, Atlanta, GA.
- "Automatically in Computation by Students with Learning Handicaps." Presented at the American Education Research Association, Atlanta, GA.

DOUGLAS STEIGERWALD
Econometrics Seminar Series

Publications:

- "Adaptive Estimation in Time Series Regression Models." Journal of Econometrics, pp. 251-275, 1992.
- "On the Finite Sample Behavior of Adaptive Estimators." Journal of Econometrics, pp. 371-400, 1992.
- "A Course in Econometrics: A Review.: Econometric Theory, pp. 405-410, 1992.
- "Uncertainty and Policy Aggressiveness." Proceedings of the American Statistical Association, Economics and Business Statistics Section, 1985, 146-150.

JOHN TOOBY
National Science Foundation
James S. McDonnell Foundation

Presentations

- "Statistical Reasoning in a Multimodular Mind, Part 1. An Evolutionary Approach to the Study of Judgment Under Uncertainty." Presented at the Human Behavior and Evolution Society, University of New Mexico. July 1992.
- "Statistical Inference in a Multimodular Mind, Part 2. Experimental Evidence." Presented at the Human Behavior and Evolution Society, University of New Mexico. July 1992.

STEVEN TREJO
Center for Labor Analysis

Publications

- "Self-Selection and Internal Migration in the United States." Journal of Urban Economics, vol 32, no. 2, pp. 159-185 September 1992. Co-author: George J. Borjas.
- "National Origin and Immigrant Welfare Reciprocity." Journal of Public Economics, vol 50, no. 3, pp. 325-344, March 1993. Co-author: George J. Borjas.
- "Overtime Pay, Overtime Hours, and Labor Unions." Journal of Labor Economics, vol. 11, no. 2, April 1993.

Working Papers

- "Does the Statutory Overtime Premium Discourage Long Workweeks?"

RONALD WILLIAMS
California Department of Health

Publications

- "1984 - 1988 Maternal and Child Health Data Base: Descriptive Narrative." For the State of California, Department of Health Services. 1992.
- "1985 -1989 Maternal and Child Health Data Base: Descriptive Narrative." For the State of California, Department of Health Services. 1993.
- "Using California's Maternal and Child Health Data Base to Improve Hospital Special Perinatal Outcomes." For the California Association of Hospitals and Health Systems Sponsored Conference on Health Care Data: Sources, Uses, Needs; Sacramento, California, 1991.
- "Academic Perspective on Data Systems." For the Centers For Disease Control MICHHP Data Conference; Atlanta, Georgia. 1992.
- "Perspective on the Maternal and Child Health Data Base." For the Community Perinatal Network; Los Angeles, California. 1992.
- "Using AVSS and EPU-INFO for Producing MCAH Reports." For the Institute For County MCAH Directors and Their Data Associates; San Diego, California, 1992.
- "AVSS Approach to the Electronic California Birth Certificate." For the Sacramento County Health Department; Sacramento, California, 1992.
- "The Maternal and Child Health Data Base." For the Sansum Medical Research Foundation; Santa Barbara, California, 1992.
- "Vital Records Automation: The AVSS Perspective." For the California Conference of Local Health Data Managers Annual Meeting; Sacramento, California. 1993.
- "State Vital Records Data." For the Charles R. Drew University of Medicine and Science Minority Health Workshop; Los Angeles, California. 1993.

MAYFAIR YANG -
National Science Foundation PYI

Publications

- Politics and the Art of Social Relationships in China. Cornell University Press. Forthcoming ,1994.
- "Gender, State Censorship & Overseas Capital: An Interview with Chinese Film Director Zhang -Yimou", in Public Culture. Winter 1993.
- "State Hegemony or a Plebeian Public Sphere? Film Discussion Groups in China", in Visual Anthropology. Forthcoming.

Presentations

- "Voluntary Organizations in Wenzhou Small Towns" ("Wenzhou xiangzhen minjian zuzhi"). Conference on Chinese at the End of the Century, California Polytechnic University, Pomona. July 4-5, 1992.
- "Chinese Family, Kinship and Gender." Presentation to High School Teachers at the East Asian-Pacific Rim Program, UC Los Angeles. August 7, 1992.

CORE BUDGET (as of June 30)	FTE	CORE BUDGET	EXPENSE AMOUNT
Academic Salaries			
Director	0.40	37,550.00	28,710.00 *
Stipend		4,200.00	3,850.00
Other			
Staff Salaries	3.00	81,702.00	83,309.00 **
General Assistance		6,371.00	29,382.00 ***
Employee Benefits		42,724.00	42,724.00
Supplies & Expense		25,936.00	17,000.00 #
Equipment		0.00	4,015.00 ##
Other - Discretionary Funds		12,125.00 *#	3,000.00 ##
*# Funds redistributed to Sub 2 for temp. G.A.			
TOTAL CORE FTE 1992-93	3.40		
SUB-TOTAL CORE BUDGET 1992-93		210,608.00	
Temporary Sub 2 Augmentation	0.50	12,551.00	
Budgetary Savings Target		-4,935.00	
1992-93 Perm. Budget Reduction		-2,517.00	
Temporary Relief from OR		2,517.00	
*Director VERIP savings, return excess to VCAA		-2,960.00	
Transfers fr subs 2,3 & 7 to cover sub 9 deficit		-5,060.00	
TOTAL CORE BUDGET 1992-93		210,204.00	
TOTAL EXPENDITURES FOR 1992-93			211,990.00

**Includes salary savings. fr AAll med. leave Nov.-Feb.

***Includes add'l 25% each for Jacobson & Dandona, 63% Woods, 38% Johnson, and up to 49% variable student employment.

#Includes reimbursements for copying costs

##Includes expds. fr research commitments fr prior years.

RECHARGE/INCOME ACCOUNT	ACTUAL INCOME	ACTUAL EXPENSE
Academic Salaries		
Staff Salaries		
General Assistance		
S&E		
Benefits		
Other		
TOTAL RECHARGE REVENUE		
TOTAL RECHARGE EXPENSES		

SALES OF PUBLICATIONS

INTRAMURAL FUNDING*

	INCOME AMOUNT	EXPENSE AMOUNT
A. Ford Letters & Science	1,200.00	1,200.00
	0.00	0.00
	0.00	0.00
	0.00	0.00
TOTAL INTRAMURAL FUNDING/EXPENDITURES	1,200.00	1,200.00

OTHER INCOME (Specify source & use)

_____	_____	_____
_____	_____	_____
_____	_____	_____
TOTAL AMOUNT OF SUPPORT FUNDS FOR THE YEAR	<u>211,404.00</u>	
TOTAL EXPENDITURES FOR THE YEAR		<u>213,190.00</u>

*Include all temporary funds such as Research Committee Awards, OR seed or matching funds, Chancellor's Discretionary, Affirmative Action allocations, etc..
Please do not include funds which were processed by Contracts and Grants

1992/93 INCOME/EXPENSE FOR Community & Organization Research Institute

MATCHING FUNDS FOR CONTRACTS AND GRANTS IN ORU

ALLOCATED TO ACADEMIC DEPARTMENTS

FOR: PERSON/PROJECT	SOURCE OF FUNDS	INCOME AMOUNT	EXPENSE AMOUNT
<u>A. Ford/NSF Project</u>	<u>L&S FRAP</u>	<u>600.00</u>	<u>600.00</u>
<u>Thompson/DuBois/Chafe</u>	<u>L&S IUC</u>	<u>10,000.00</u>	<u>0.00</u>
<u>Thompson/DuBois/Chafe</u>	<u>IHC</u>	<u>8,965.00</u>	<u>3,565.00</u>
TOTAL MATCHING FUNDS PLACED OUTSIDE ORU		<u>19,565.00</u>	<u>4,165.00</u>

1 Academic personnel engaged in research:	
a. Faculty	21
b. Professional Researchers	8
c. Specialists	1
d. Postdoctorals	0
e. Postgraduate Researchers	1
TOTAL	31
2 Graduate Students:	
a. Employed on contracts and grants	50
b. Employed on other sources of funds	0
c. Participating through assistantships	0
d. Participating through traineeships	8
e. Other (specify) (CORI Special Projects; CORI Admin)	2
TOTAL	60
3 Undergraduate Students:	
a. Employed on contracts and grants	22
b. Employed on other funds	4
c. number of volunteers, & unpaid interns	45
TOTAL	71
d. Average number of hours/week of student assistance	14
4 Participation from outside UCSB:	
a. Academics	2
b. Postdoctorals	0
c. Postgraduate Researchers	0
d. Other - Staff Research Associates	7
5 Staff (Univ. & Non-Univ. Funds):	
a. Technical	10
b. Administrative/Clerical	14
6 Publications	63
7 Seminars, symposia, workshops sponsored	24
8 Proposals submitted	50
9 Number of different awarding agencies dealt with*	28
10 Number of extramural awards administered	54
11 Dollar value of extramural awards administered during year**	4,986,172.00
12 Number of Principal Investigators***	66
13 Dollar value of other project awards****	126,249.00
14 Number of other projects administered	14
15 Total base budget for the year (as of June 30)	179,927.00
16 Dollar value of intramural support	13,933.00
17 Total assigned square footage in ORU	7,063

*Count each agency only once (include agencies to which proposals have been submitted).

**If the award was open during the year, even if for only one month, please include in total.

***Number of PIs, Co-PIs and Proposed PIs (Count each person only once).

****Other projects-such as donations, presidential awards, fellowships; anything that isn't core budget, extramural, or intramural.

Proposals Awarded
By Department/PI
07/01/92 - 06/30/93

Date: 10/04/93
Time: 11:23:48

College/Department/PI	P.I. & Time	Total Number	Total Support	Indirect Costs	Begin Date	End Date
COMMUNITY & ORGANIZATION RES INSTITUTE						
R. P. APPELBAUM		5				
UC PACIFIC RIM RESEARCH PROGRAM						
ucsb08061792			60,000	0	07/01/92	06/30/93
COMMODITY CHAINS AND INDUSTRIAL DISTRICTS IN THE						
R. P. APPELBAUM		5				
JOHN RANDOLPH HAYNES AND DORA HAYNES FDN						
UCSB 08930045			20,000	0	07/01/92	06/30/93
Garment Manufacturing in Los Angeles: Race, Ethnicity						
J. BADASH		5				
P. NEUSHUL		10				
UC ENERGY RESEARCH GROUP						
UCSB 08078792			12,800	0	07/01/92	06/30/93
OCEAN FOOD AND ENERGY FROM CALIFORNIA MARICULTURE:						
F. J. BOVE		100				
NATIONAL ENDOWMENT FOR THE HUMANITIES						
RK2003093						
State Evolution on the Pacific Coast of Guatemala						
R. T. DEACON		5				
NATIONAL SCIENCE FOUNDATION						
SBR-9223315			15,000	1,726	05/01/93	04/30/94
The Political Economy of Natural Resources in Devel						
H. FUKUI		5				
UC PACIFIC RIM RESEARCH PROGRAM						
ucsb 08062092			83,714	23,518	04/15/93	03/31/95
INFORMAL POLITICS AND ECONOMIC DEVELOPMENT IN EAST						
M. M. GERBER		25				
M. I. SEMMEL		25				
DEPARTMENT OF EDUCATION						
H029D20030-93			50,000	0	07/01/92	06/30/93
A Project for Doctoral-Level Leadership Personnel Pre						
J. C. INGHAM		10				
CAL STATE UNIVERSITY FULLERTON FOUNDAT						
055778120			92,189	6,828	09/01/93	08/31/94

PREDICTING THERAPY OUTCOME IN CHILDREN WHO STUTTER					
A. J. INGHAM	5	98,641	31,538	09/01/92	08/31/93
PUBLIC HEALTH SERVICE					
R01 DC 00060-03					
Time Interval Investigations of Stuttering Measure	66	177,220	49,695	12/01/92	11/30/93
C. S. KAPLAN					
UNITED STATES INSTITUTE OF PEACE					
USIP04992F					
Russian Nationalism and the Politics of Transition					
J. M. LOOMIS	5	40,000	0	04/01/93	08/31/94
R. L. KLATZKY	5				
R. G. GOLLEDGE	5				
PUBLIC HEALTH SERVICE					
R01EY09740					
NAVIGATION AID FOR THE VISUALLY IMPAIRED					
L. M. MCDONNELL	10	141,741	18,509	08/01/92	07/31/93
DEPARTMENT OF EDUCATION					
R117G10027					
Assessment Policy and Educational Practice					
M. MITHUN	5	91,120	27,058	12/01/92	11/30/93
NATIONAL SCIENCE FOUNDATION					
DBS-9011018					
Barbarano Chumash Grammar					
W. C. ROOF	5	50,000	10,770	11/01/92	10/31/94
JOHN RANDOLPH HAYNES AND DORA HAYNES FDN					
UCSB930188					
Renegotiating the Social Contract: Religion and Publi					
% C. STONICH	5	115,362	0	01/01/93	12/31/93
UC PACIFIC RIM RESEARCH PROGRAM					
ucsb08062192					
THE SOCIAL AND ENVIRONMENTAL CONSEQUENCES OF SHRIMP					
S. A. THOMPSON	15	41,000	0	07/01/92	06/30/93
J. W. DUBOIS	15				
W. CHAFE	15				
NATIONAL ENDOWMENT FOR THE HUMANITIES					
RT2143392					
CORPUS OF SPOKEN AMERICAN ENGLISH					
J. A. TOOBY	25	203,734	27,476	07/01/92	06/30/94
NATIONAL SCIENCE FOUNDATION					
DBS-9157449					
PYI - EVOLUTIONARY BIOLOGY AND HUMAN PSYCHOLOGICAL					
J. A. TOOBY	25	62,500	6,250	08/01/92	07/31/93
JAMES S. MCDONNELL FOUNDATION					
91-31					
PYI Match: Evolutionary Biology and Human Psychological					
B. VOORHIES	5	37,500	0	11/01/92	11/01/96
H. JOHN HEINZ III CHARITABLE TRUST					
UCSB08930377					
Mobility & Food-Getting Behavior of Late Preceramic C					
		8,000	0	02/01/93	02/28/94

P. L. WALKER 5

NAVY					
N6971192LT2023					
Native American Graves Protection and Repatriation Act of					
R. L. WILLIAMS		8,253	40,000	09/21/92	12/01/93
CAL DEPARTMENT OF HEALTH					
91-12638					
Data Program-Maternal and Child Health Data Base					
M. YANG		17,500	253,000	04/01/92	06/30/94
15					
NATIONAL SCIENCE FOUNDATION					
db9057505					
VOLUNTARY ASSOCIATIONS AND THE EMERGENCE OF CIVIL		3,500	35,000	08/01/92	07/31/94
22					
TOTAL COMMUNITY & ORGANIZATION RES INSTITUTE		232,621	1,728,521		

**CORI SPACE ALLOCATION
1992-1993**

North Hall

Rm 2202 Sq ft = 250 Computer/ Storage Copy Room
Room 2204 Sq ft = 250 AVSS/MCH Williams
Rm 2206 Sq ft = 360 Conference Room (Pellish Room)
Rm 2208 Sq ft = 439 Conference Room

Rm 2201 2201B Sq ft = 237 Sq ft = 93 CORI Admin. Offices
Rm 2201A Sq ft = 124
Rm 2205 Sq ft = 124 Recruitment Econ.
Rm 2207 Sq ft = 264 AVSS/MCH Williams
Rm 2209 Sq ft = 439 AVSS-MCH/ Williams McDonnell/ DOE Phillips/ NIJ
Rm 2213 2213C Sq ft = 175 Sf = 130 PHS Loomis et. al.
2213A 2213B Sf = 89 Sf = 130

Rm 1013 Sq ft = 158 NIJ Votey
Rm 1015 Sq ft = 158 NIJ Phillips
Rm 1017 Sq ft = 158 Owen-Facility for Research & Accounting Education

North Hall
Total Rooms = 17
Total Square feet = 3578

Ellison Hall

Rm 2704 Sq ft = 143 NSF/Lilly Fnd. Sutton
Rm 5805 Sq ft = 119 NSF Kaplan

Ellison Hall
Total Rooms = 2
Total Square feet = 262

**CORI SPACE ALLOCATION
1992-1993**

Girvetz Hall

Rm 1306 <i>Sq. ft = 199</i> Pac Rim/Haynes Appelbaum	Rm 1307 <i>Sq. ft = 138</i> <i>Sq. ft = 138</i> Academic Council
Rm 1308 <i>Sq. ft = 203</i> Academic Council	Rm 1309 <i>Sq ft = 141</i> NEH Thompson
Rm1310A Rm 1310 <i>Sq ft = 100 (10)</i> <i>Sq ft=100 (10a)</i> O'Connor Temp.	Rm 1311 <i>Sq. ft = 141</i> NEH Thompson/ Dubois
Rm 1312 <i>Sq ft = 203</i> Academic Council	Rm 1313 <i>Sq ft = 141</i> Computer Rm
Rm 1314 <i>Sq. ft = 203</i> NSF/Gift MARC Ford	Rm 1315 <i>Sq. ft = 141</i> NSF Mithun
Rm 1316 <i>Sq. ft = 203</i> NSF/Gift MARC Ford Lab	Rm 1317 <i>Sq. ft = 141</i> Haynes/Pew Roof
Rm 1318 <i>Sq. ft = 203</i> Dept. of Educ. Gerber/Semmel	Rm 1319 <i>Sq. ft = 141</i> NSF Bielby
Rm 1320 <i>Sq. ft = 203</i> NSF/Gift Ford Temporary	Rm 1321 <i>Sq. ft = 141</i> Cal. Pol. Sem. Molotch
Rm 1322 <i>Sq. ft = 199</i> Pac. Rim Ho/Zimmer	Rm 1323 Algebra Institute <i>Sq ft = 141</i>
	Rm 1325 <i>Sq. ft = 141</i> NSF Book

Girvetz Hall
Total Rooms = 20
Total Square feet = 3223

10/24/91
00:28

FDX: FACILITIES INVENTORY
SELF-AUDIT OF SPACE USE

FDXSP010
PAGE 212

PROGRAM: 2.1.30.O.O OR MUL/INTERDST

SPACE STANDARD: NONSTD

DEPT: COM ORG INST

ROOM NUMBER	ROOM CODE	ROOM TYPE	S/N	ASF	STATIONS	GRANT
1323	210	RESEARCH	S	141	3	
1325	210	RESEARCH	S	141	3	
20 ROOMS TOTALS:				3223	67	

BUILDING: NORTH HALL CAAN: 8535

1013	211	340	ACAD OFF	S	158	2	
1015	211	340	ACAD OFF	S	158	2	
1017	211	340	ACAD OFF	S	158	2	
2201	320	OTHER OFF	S	237	2		
2201A	320	340	ACAD OFF	S	124	3	
2201B	320	OTHER OFF	S	93	1		
2202	320	OTHER OFF	S	250	1		
2204	211	340	OTHER OFF	S	250	1	
2205	211	340	ACAD OFF	S	124	1	
2206	340	CONFERENCE	S	360	10		
2207	211	340	OTHER OFF	S	264	2	
2208	340	CONFERENCE	S	439	12		
2209	211	340	ACAD OFF	S	439	7	
2213	210	RESEARCH	S	175	10		
2213A	211	RESRCH OFC	S	89	1		
2213B	211	RESRCH OFC	S	130	2		
2213C	211	RESRCH OFC	S	130	2		
17 ROOMS TOTALS:				3578	61		

10/24/91
00:28

FDX: FACILITIES INVENTORY
SELF-AUDIT OF SPACE USE

FDXSP010
PAGE 211

PROGRAM: 2.1.30.0.0 OR MUL/INTERDST

SPACE STANDARD: NONSTD

DEPT: COM ORG INST

ROOM NUMBER	ROOM CODE	ROOM TYPE	S/N	ASF	STATIONS	GRANT
-------------	-----------	-----------	-----	-----	----------	-------

BUILDING: ELLISON HALL CAAN: 8563

2704	310	ACAD OFF	S	143	1	0063
5805	310	ACAD OFF	S	119	1	0063

2 ROOMS TOTALS: 262 2

BUILDING: GIRVETZ HALL CAAN: 8564

1306	211	RESRCH OFC	S	199	2	
1307	211	RESRCH OFC	S	138	3	
1308	340	CONFERENCE	S	203	15	
1309	211	RESRCH OFC	S	141	2	
1310	335	OFFICE SRV	S	100	0	
1310A	722	STORAGE-OF	S	100	3	
1311	211	RESRCH OFC	S	141	2	
1312	211	OTHER OFF	S	203	2	
1313	210	RESEARCH	S	141	6	
1314	211	OTHER OFF	S	203	2	
1315	211	RESRCH OFC	S	141	3	
1316	225	RSCH LABSV	S	203	0	
1317	211	RESRCH OFC	S	141	1	
1318	211	RESRCH OFC	S	203	7	
1319	211	RESRCH OFC	S	141	2	
1320	211	RESRCH OFC	S	203	4	
1321	211	RESRCH OFC	S	141	4	
1322	211	RESRCH OFC	S	199	3	